

サンアプロのスルホニウム塩系光酸発生剤

Sulfonium salt type Photo Acid Generators of SAN-APRO

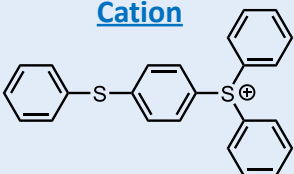
●業界No.1の溶剤溶解性(CPI-200K)

These products exhibit excellent solubility in organic solvents and monomers(CPI-200K).

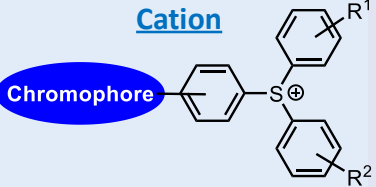
●365nm高感度、耐熱高透明性などのニーズを捉えた組成設計

Our strength is composition design that captures needs, high sensitivity at 365 nm, no coloring of resin.

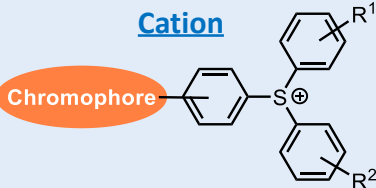
CPI®-100, 200 series

Cation	Anion	Product name	Feature
	X^{\ominus}	PF ₆ ... CPI-100P	高純度
		SbF ₆ ... CPI-101A	高純度
		(Rf) _n PF _{6-n} ... CPI-200K	高溶解

CPI®-300, VC-1 series(High sensitivity at 365 nm)

Cation	Anion	Product name	Feature
	X^{\ominus}	B(C ₆ F ₅) ₄ ... CPI-310B	i線高感度、 低腐食
		FG ... CPI-310FG VC-1FG	i線高感度、 耐熱高透明性、 耐金属腐食性

CPI®-400, ES-1 series (High sensitivity at 365~436 nm)

Cation	Anion	Product name	Feature
	X^{\ominus}	(Rf) _n PF _{6-n} ... CPI-410S	LED対応
		B(C ₆ F ₅) ₄ ... ES-1B	LED対応、 耐金属腐食性



サンアプロのスルホニウム塩系光酸発生剤

Sulfonium salt type Photo Acid Generators of SAN-APRO

特長 Features

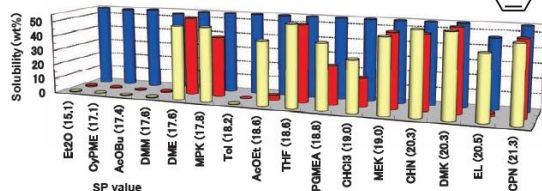
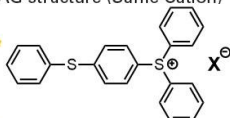
溶剤溶解性 Solubility for solvent

- **CPI-200K は溶剤溶解性に優れる**
CPI-200K shows high solubility for solvents

Comparisons of Anions,

PAG structure (Same Cation)

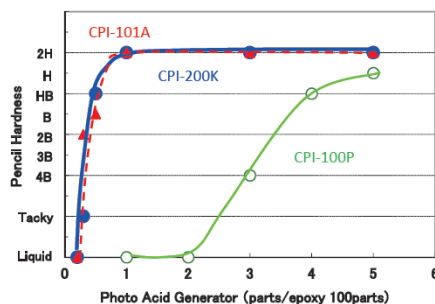
■: $(Rf)_nPF_6-n$ ■: SbF_6 ■: CF_3SO_3



(略号) CyPMe : CyclopentylMethylEther, DMM : Dimethoxymethane,
DME : Dimethoxyethane, CHN : Cyclohexanone, EL : Ethyl Lactate,
CPN : Cyclopentanone,

UV 硬化性 UV Curability

- **CPI-200K は非Sb 系かつ高反応性(エポキシ樹脂のカチオン硬化)**
CPI-200K is non-antimony type and it shows high reactivity

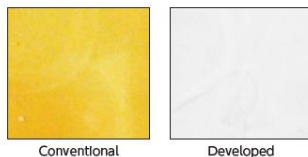


新規アニオンの開発 Development of New Anion

- **新規アニオン (FGアニオン) を開発**
We developed new type of FG-anion.

- ☞ **非Sb系、高反応性**
Non-antimony, high reactivity
- ☞ **耐熱着色性** No coloring of resin
- ☞ **耐金属腐食性** No corrosive of metals

耐熱試験後の
硬化フィルム外観
Appearance of cured
film after heat test.



カチオン構造 Cationic structure

- **CPI-300シリーズ, VC-1シリーズ**
…365nmLEDに対応
CPI-300 series : High sensitivity at 365 nm
- **CPI-400シリーズ, ES-1シリーズ**
…365~436nmLEDに対応
CPI-400 series, ES-1 series : High sensitivity at 365-436 nm

